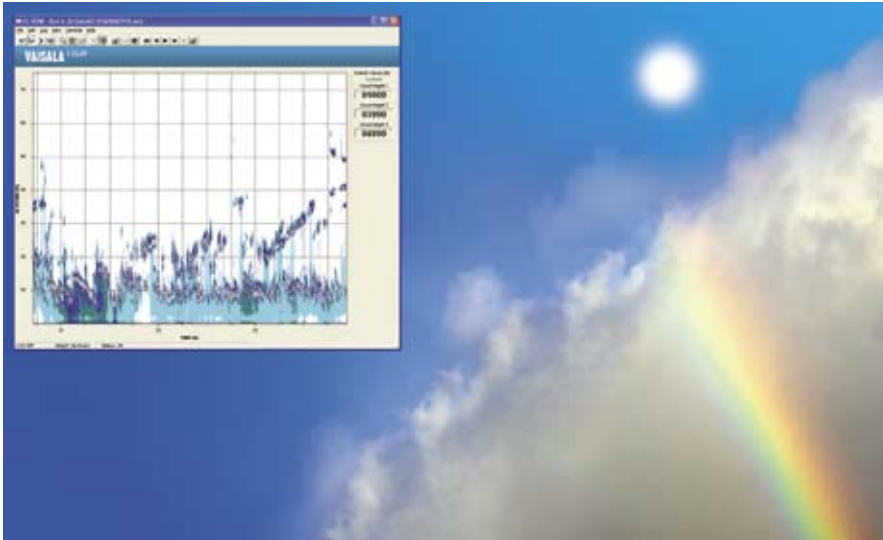


## CL-VIEW Graphical User Interface for Ceilometers



*CL-VIEW is Vaisala's improved graphical interface for ceilometer users.*

### Features / Benefits

- Displays and logs data from one or more ceilometers while running other Windows applications
- Viewing of previously logged data is possible while logging and displaying real-time data
- Cloud base data and backscatter profiles in clear graphical form
- A large variety of user selections
- Maintenance access via internal Terminal program
- Sky condition window

Vaisala Graphical User Interface for Ceilometers CL-VIEW is an independent data collection, storage and presentation program designed for Vaisala's CL51, CL31, CT25K and CT75K Laser Ceilometers. The Ceilometer model's CT12K and LD40 are also partially supported.

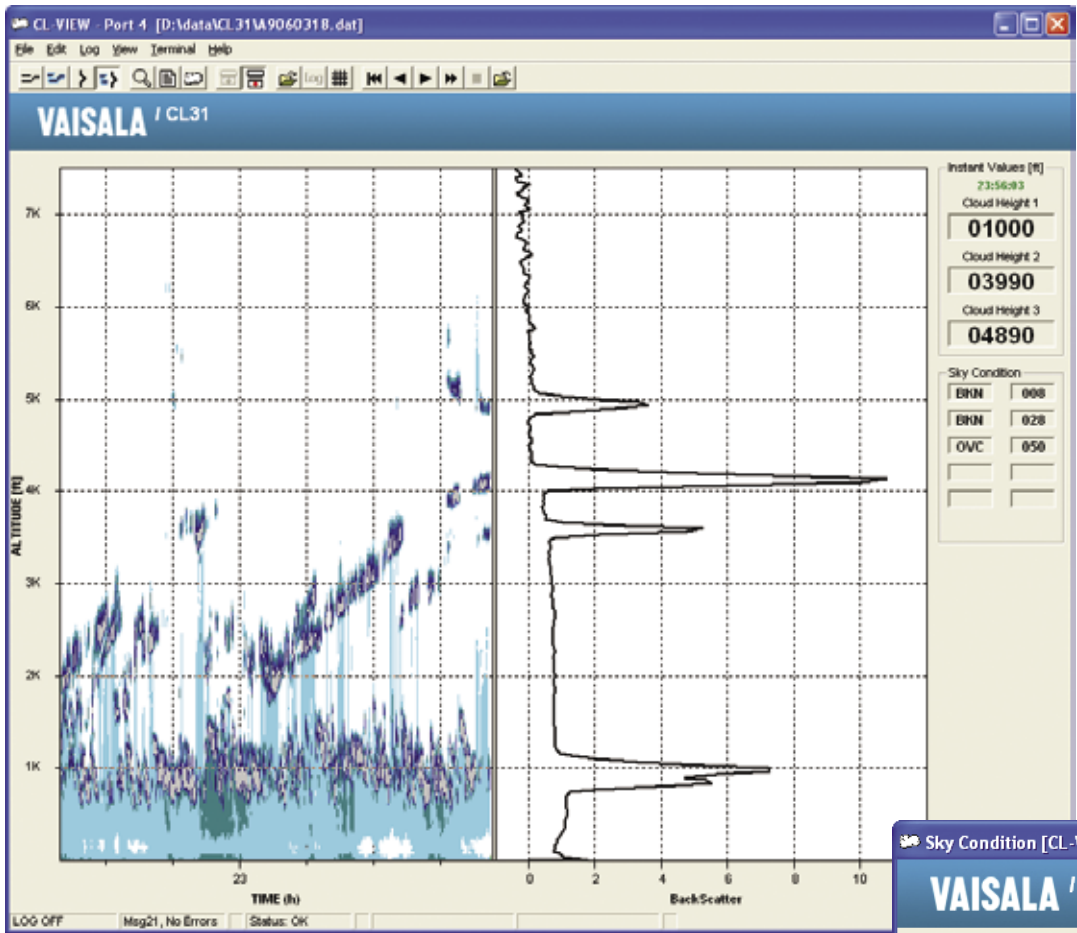
The CL-VIEW program runs on a PC with Microsoft® Windows® 7, Windows Vista or earlier operating systems, providing all conveniences of a graphical user interface. Menus, option screens, icons and help texts make the program easy and fast to use. Communication between the ceilometer and the PC is arranged via a direct RS-232 serial line or, at longer distances, via a modem.

The CL-VIEW is designed to be optimal for receiving, storing, visualising and analysing data. The software is very flexible, and it can be tailored to suit operators' needs.

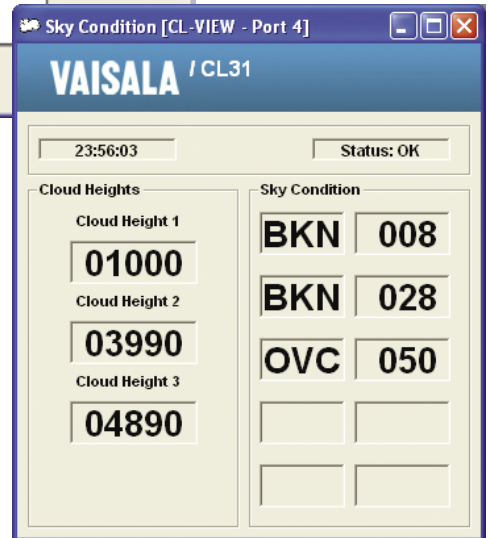
The graphical presentations include cloud detection, cloud intensity and backscatter profile graphs. In all three graphs also numerical cloud height information, ceilometer status, log status along with time and date are displayed.

If the ceilometer is equipped with the Sky Condition option, this message content can be viewed either in the main window or in a separate window. It provides cloud layer height and information in either text or symbolic format.

CL-VIEW has an internal Terminal program, which can be used to check the instrument status and change the internal parameters of ceilometer.



The cloud intensity is shown as a point graph, in which the colour is proportional to the strength of the return signal from the altitude in question. The backscatter profile is presented as a line graph in instant and average modes. Both modes can be displayed simultaneously.



The sky condition window presents cloud layer heights and the corresponding sky condition in either text, numerical or graphics format.

### System Requirements

32 MB RAM, 50 MB free hard disk space.  
 Microsoft® Windows® 95, Windows® 98,  
 Windows NT®, Windows® 2000, Windows® XP,  
 Windows Vista, or Windows 7.



For more information, visit  
[www.vaisala.com](http://www.vaisala.com) or contact us at  
[sales@vaisala.com](mailto:sales@vaisala.com)

Ref. B210506EN-B ©Vaisala 2009  
 This material is subject to copyright protection, with all copyrights retained by Vaisala and its individual partners. All rights reserved. Any logos and/or product names are trademarks of Vaisala or its individual partners. The reproduction, transfer, distribution or storage of information contained in this brochure in any form without the prior written consent of Vaisala is strictly prohibited. All specifications - technical included - are subject to change without notice.

